

# NEW SANUS ELEMENTS™ POWERBRIDGE® SYSTEM

**Our PowerBridge® power and cable management system is the perfect addition to any home theater installation**

The Sanus Elements™ ELM805 PowerBridge is an in-wall power and cable management system designed to simplify the installation of cables and wiring behind wall-mounted flat-panel TVs. This discreet system allows low voltage cables and wires to be routed through the wall and into AV components, surge protectors or power conditioners for a flawless home theater installation. Color-coded wires simplify installation without modifying the existing circuit, making it easy to connect to a local AC power outlet or to use remotely in an AV equipment room.



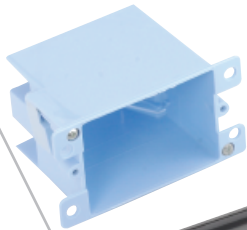
model ELM805-B1 shown



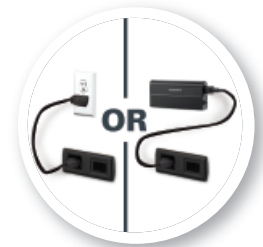
Color-coded outlets simplify installation without modifying existing circuit



Includes 6' heavy-gauge power wire



ELM805-B1



Connect to local AC power source, surge protector, or use remotely in AV equipment room



Easily install in-wall cables and wiring behind flat-panel TVs



Route low voltage cables and wires through wall and into AV components, surge protector or power conditioner for a flawless home theater installation



# NEW SANUS ELEMENTS™ POWERBRIDGE® SYSTEM

**MODEL: ELM805**

## DESCRIPTION

In-wall power and cable management system

## PRODUCT DIMENSIONS (w x d x h) / WEIGHT

9.25" x 2.25" x 2.875" / 1 lbs

23.5 x 5.7 x 7.3 cm / 0.45 kg

## PACKAGE DIMENSIONS (w x d x h) / WEIGHT

9.85" x 6.0" x 4.26" / 1.6 lbs

25.0 x 15.2 x 10.8 cm / 0.73 kg

## PACKAGE CONTENTS

- Power inlet and wall plate
- Power outlet and wall plate
- (2) Single gang junction boxes
- 6' Heavy gauge power wire

## MASTER PACK QUANTITY

30

## MSRP/MAP

\$99.99

- Includes 6' heavy-gauge power wire; non-metallic (NM) type 12-2 or 14-2 building electrical wire (Romex®) not included
- Easily install in-wall cables and wiring behind flat-panel TVs
- Route low-voltage cables and wires through wall and into AV components, surge protector or power conditioner for a flawless home theater installation
- Color-coded outlets simplify installation without modifying existing circuit
- Connect to local AC power source or surge protector, or use remotely in AV equipment room



**ELM805-B1**



**ELM805-W1**

